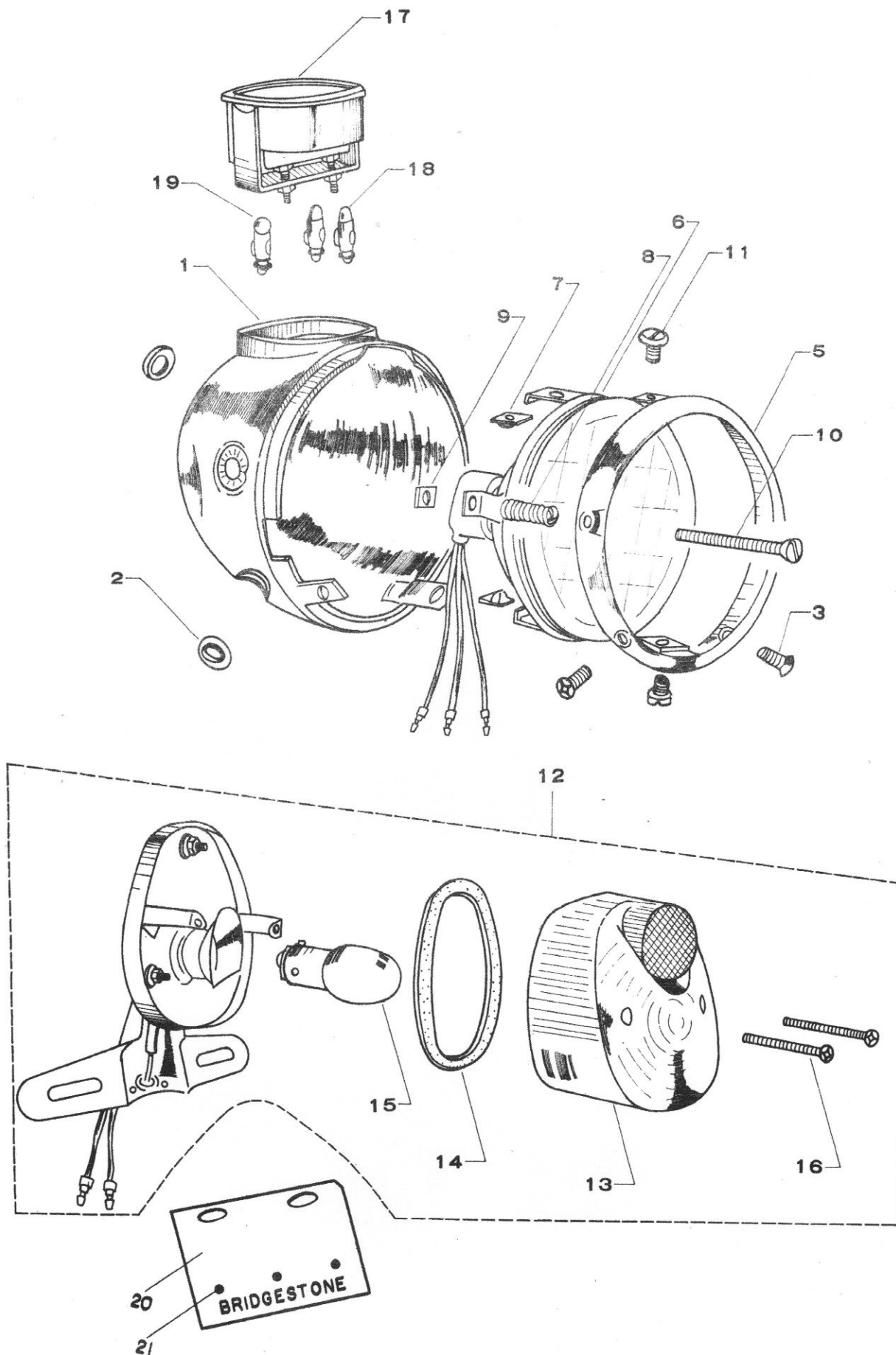


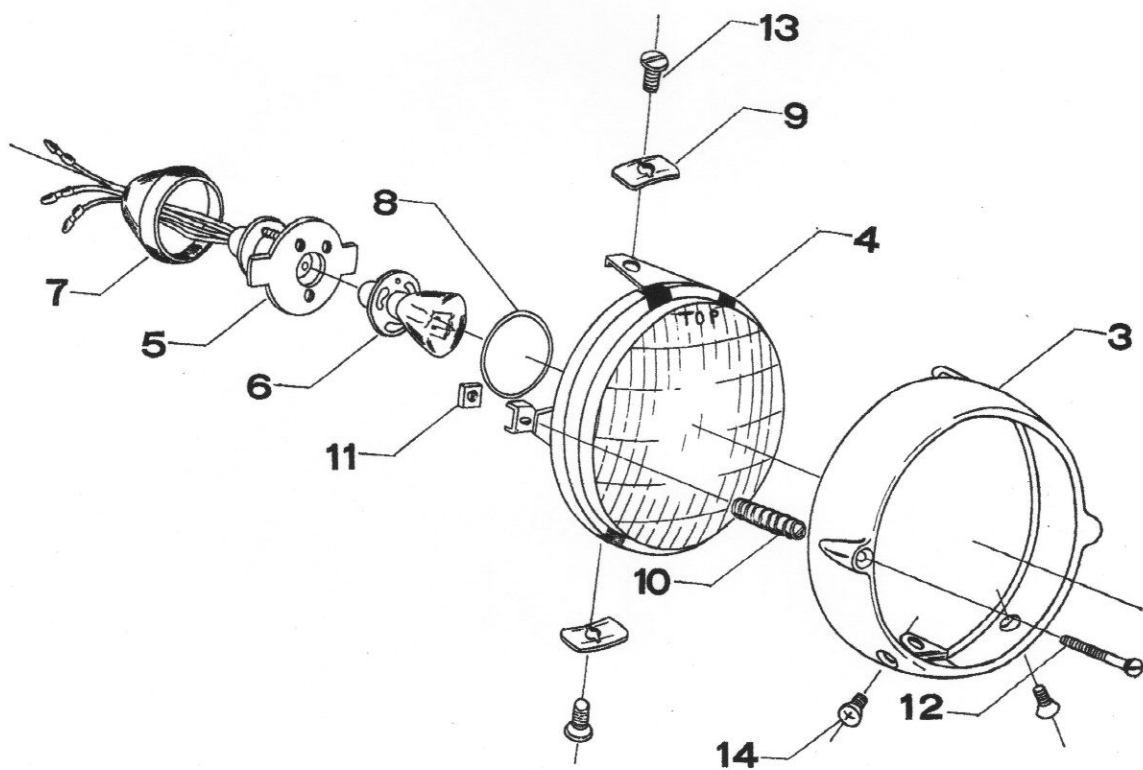
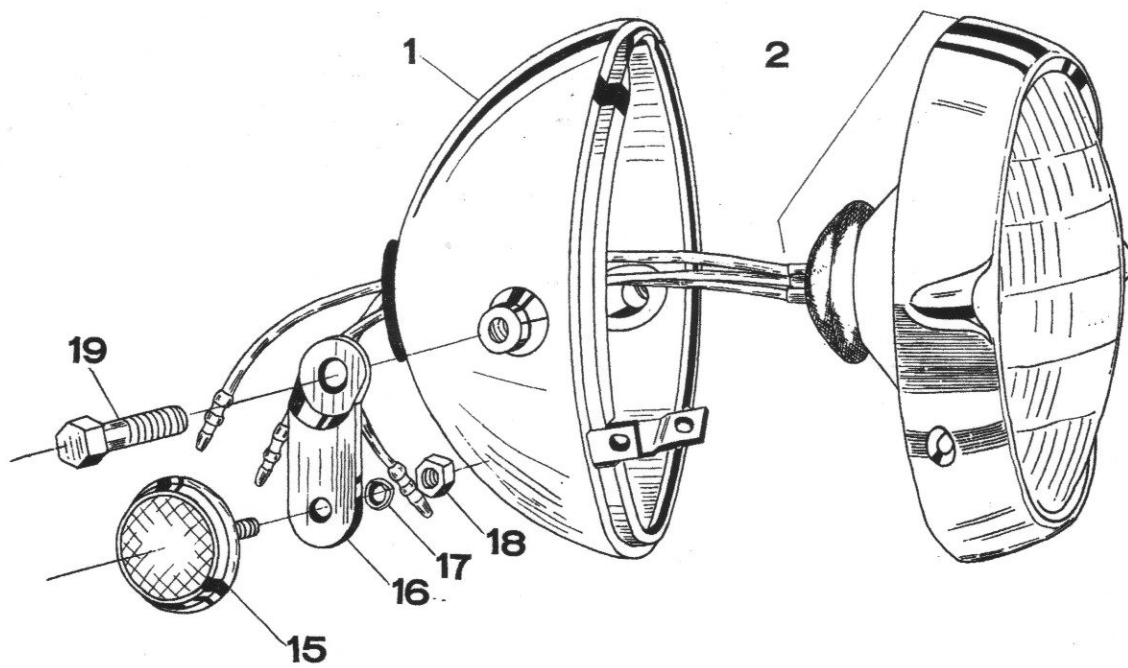
27) HEAD LAMP—TAIL LAMP—SPEEDOMETER



27) HEAD LAMP--TAIL LAMP--SPEEDOMETER

Index No.	Part No.	Part Name	No. Req'd	Old Part No.
27- 1	8111-8000-FAR	Head lamp body	1	PRK 5 x 10
27- 2	8125-8000	Head lamp grommet	2	
27- 3	0342-0510	Cross round recd oval head screw	2	
27- 4	8102-8000	Head lamp assy	1	M 4516
27- 5	8140-8000	Head lamp rim comp	1	
27- 6	8150-8000	Head lamp lens comp	1	
27- 7	8173-8000	Quick acting nut	2	
27- 8	8174-8000	Adjusting spring	1	
27- 9	8175-8000	Square nut	1	
27-10	8176-8000	Adjusting screw	1	
27-11	8177-8000	Holder screw	2	
27-12	8205-8000	Tail lamp assy	1	
27-13	8251-8000	Tail lamp lens	1	
27-14	8253-8000	Tail lamp gasket	1	
27-15	8252-3040	Tail lamp bulb	1	
27-16	0372-0330	Round head screw	2	M0 5315
27-17	8401-8000	Speedometer assy	1	
27-18	8424-3000	Speedometer bulb	2	M0 5315
27-19	8424-8000	Speedometer bulb	1	
27-20	3443-3210	Number plate supporter	1	
27-21	3452-3210	Supporter pad	3	

34) HEAD LAMP - FRONT REFLEX REFLECTOR



34) HEAD LAMP - FRONT REFLEX REFLECTER

Index No.	Part No.	Part Name	No. Req'd	Unit Price US \$ (F.O.B.)	Interchangeability				Remarks
					MIIRS	MISS	G/P	TMX	
1	8111-8200-XCI	Head lamp body	1		○	○			
2	8102-8200	Head lamp ass'y	1		○	○			
3	8140-8200	Head lamp rim comp	1		○	○			
4	8150-8200	Head lamp lens comp	1		○	○			
5	8160-8010	Socket comp	1		○	○			
6	8171-8010	Head lamp bulb	1		○	○			
7	8178-8010	Shield rubber	1		○	○			
8	8179-8010	Socket set ring	1		○	○			
9	8173-3010	Quick acting nut	2		○	○			
10	8174-3010	Adjusting spring	1		○	○			
11	8175-3010	Square nut	1		○	○			
12	8176-3010	Adjusting screw	1		○	○			
13	8177-3010	Holder screw	2		○	○			
14	0432-0510	Cross round, recd oval head screw	2						
	8206-5610	Front reflector ass'y	2		○	○	○	○	
15	8271-5610	Front reflector	2		○	○	○	○	
16	8272-5610	Front reflector bracket	2		○	○	○	○	
17	0433-0615	Spring washer	2		○	○	○	○	
18	0211-0600	Hexagon nut A	2		○	○	○	○	
19	0112-0816	Hexagon bolt A	2		○	○			