

EXCLUSIVE

PARTS CATALOG

BRIDGESTONE M II RS • M II SS

CONTENTS

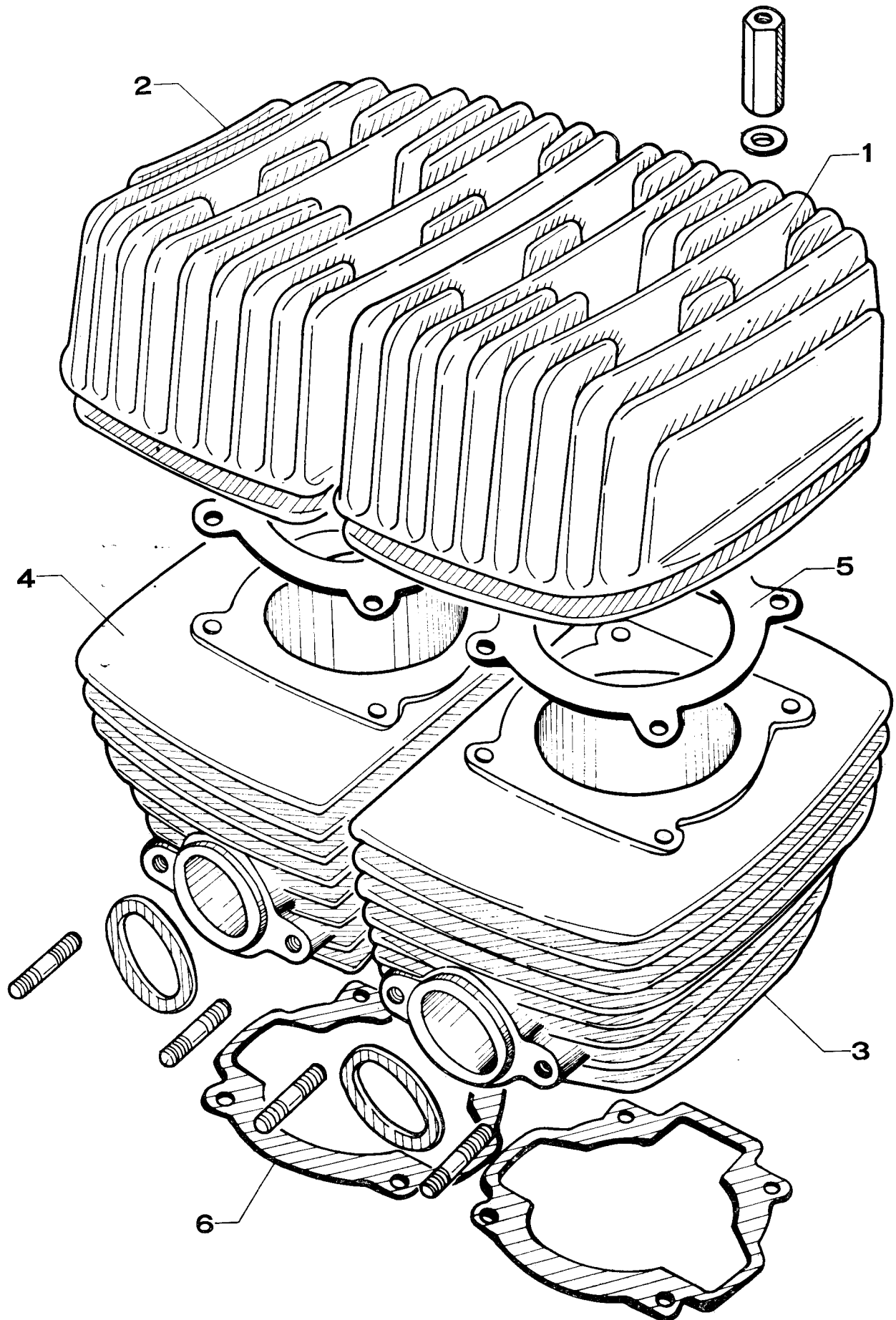
<u>INDEX No.</u>	<u>DESCRIPTION</u>	<u>PAGE</u>
33)	CYLINDER	81~82
34)	HEAD LAMP • FRONT REFLEX REFLECTOR	83~84
35)	SPEEDOMETER • COVER ORNAMENT.....	85~86
36)	RIGHT HANDLE GRIP • FRONT STOP SWITCH	87~88
37)	DUAL SEAT • REAR REFLEX REFLECTOR.....	89~90

INSTRUCTIONS FOR USING THE PARTS CATALOG

1. The parts listed in this catalog are exclusive for models M II RS, M II SS.
2. The other parts are identical with those of 175DT & 175HS.
3. Please file this catalog with 175 DT/HS Parts Catalog following index No. 32—page 80.



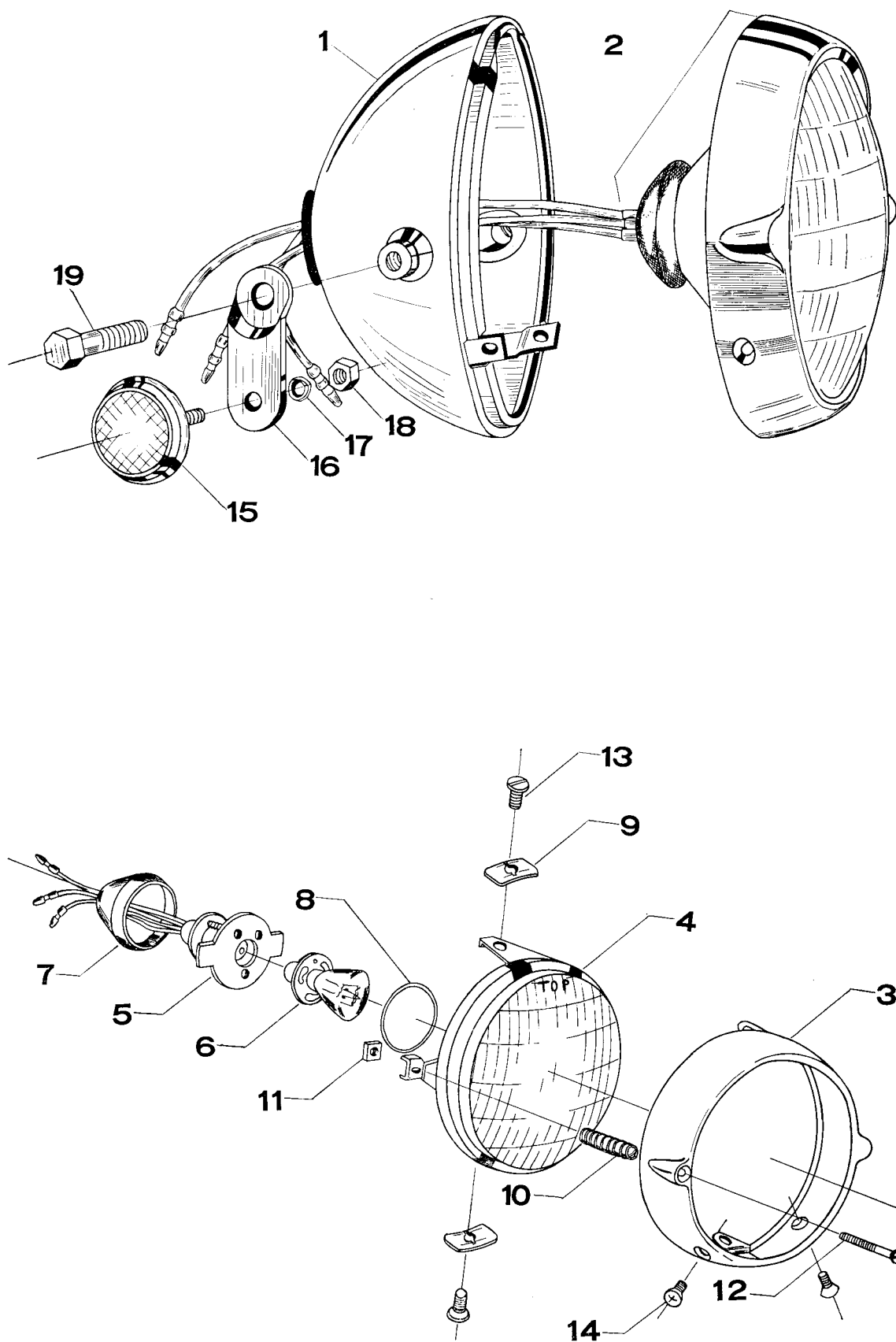
33) CYLINDER - CYLINDER HEAD



33) CYLINDER-CYLINDER HEAD

Index No.	Part No.	Part Name	No. Req'd	Unit Price US \$ (F.O.B.)	Interchangeability				Remarks
					MIIRS	MISS	G/P	TMX	
1	1112-8200	Left cylinder head	1		○	○			
2	1113-8200	Right cylinder head	1		○	○			
3	1122-8200	Left cylinder	1		○	○			
4	1123-8200	Right cylinder	1		○	○			
5	1141-8200	Cylinder head gasket	2		○	○			
6	1143-8200	Cylinder base gasket	2		○	○			
	1341-5400	Piston 5410	2		○	○	○	○	
	1305-5400	Piston ring set	2		○	○	○	○	
	1381-5400	Piston pin	2		○	○	○	○	
	1501-8200	Oil pump ass'y	1		○	○			The oil pump for RS & SS is different from that of 175 DT/HS. Number 200 is stamped on the main body of RS & SS oil pump. VM-18 SC
	1600-8200	Carburetor ass'y	2		○	○			
	2101-8200	Crank case ass'y	1		○	○			
	1614-5010	Throttle valve	2		○	○			Interchangeable with 90SP
	1633-5410	Needle jet	2		○	○			Interchangeable with 100 SCR

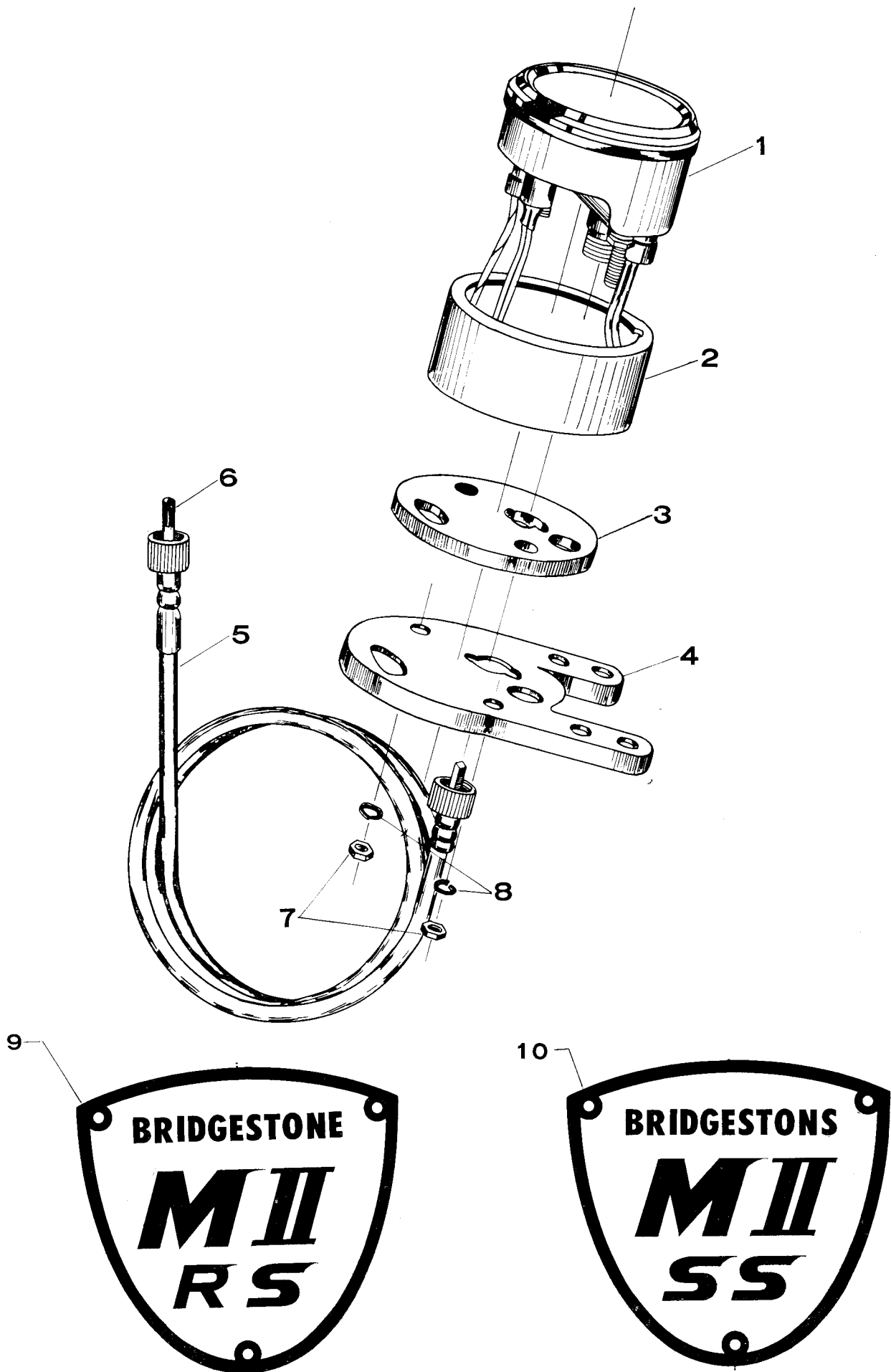
34) HEAD LAMP - FRONT REFLEX REFLECTOR



34) HEAD LAMP - FRONT REFLEX REFLECTER

Index No.	Part No.	Part Name	No. Req'd	Unit Price US \$ (F.O.B.)	Interchangeability				Remarks
					MIIRS	MISS	G/P	TMX	
1	8111-8200-XCI	Head lamp body	1		○	○			
2	8102-8200	Head lamp ass'y	1		○	○			
3	8140-8200	Head lamp rim comp	1		○	○			
4	8150-8200	Head lamp lens comp	1		○	○			
5	8160-8010	Socket comp	1		○	○			
6	8171-8010	Head lamp bulb	1		○	○			
7	8178-8010	Shield rubber	1		○	○			
8	8179-8010	Socket set ring	1		○	○			
9	8173-3010	Quick acting nut	2		○	○			
10	8174-3010	Adjusting spring	1		○	○			
11	8175-3010	Square nut	1		○	○			
12	8176-3010	Adjusting screw	1		○	○			
13	8177-3010	Holder screw	2		○	○			
14	0432-0510	Cross round, recd oval head screw	2						
	8206-5610	Front reflector ass'y	2		○	○	○	○	
15	8271-5610	Front reflector	2		○	○	○	○	
16	8272-5610	Front reflector bracket	2		○	○	○	○	
17	0433-0615	Spring washer	2		○	○	○	○	
18	0211-0600	Hexagon nut A	2		○	○	○	○	
19	0112-0816	Hexagon bolt A	2		○	○			

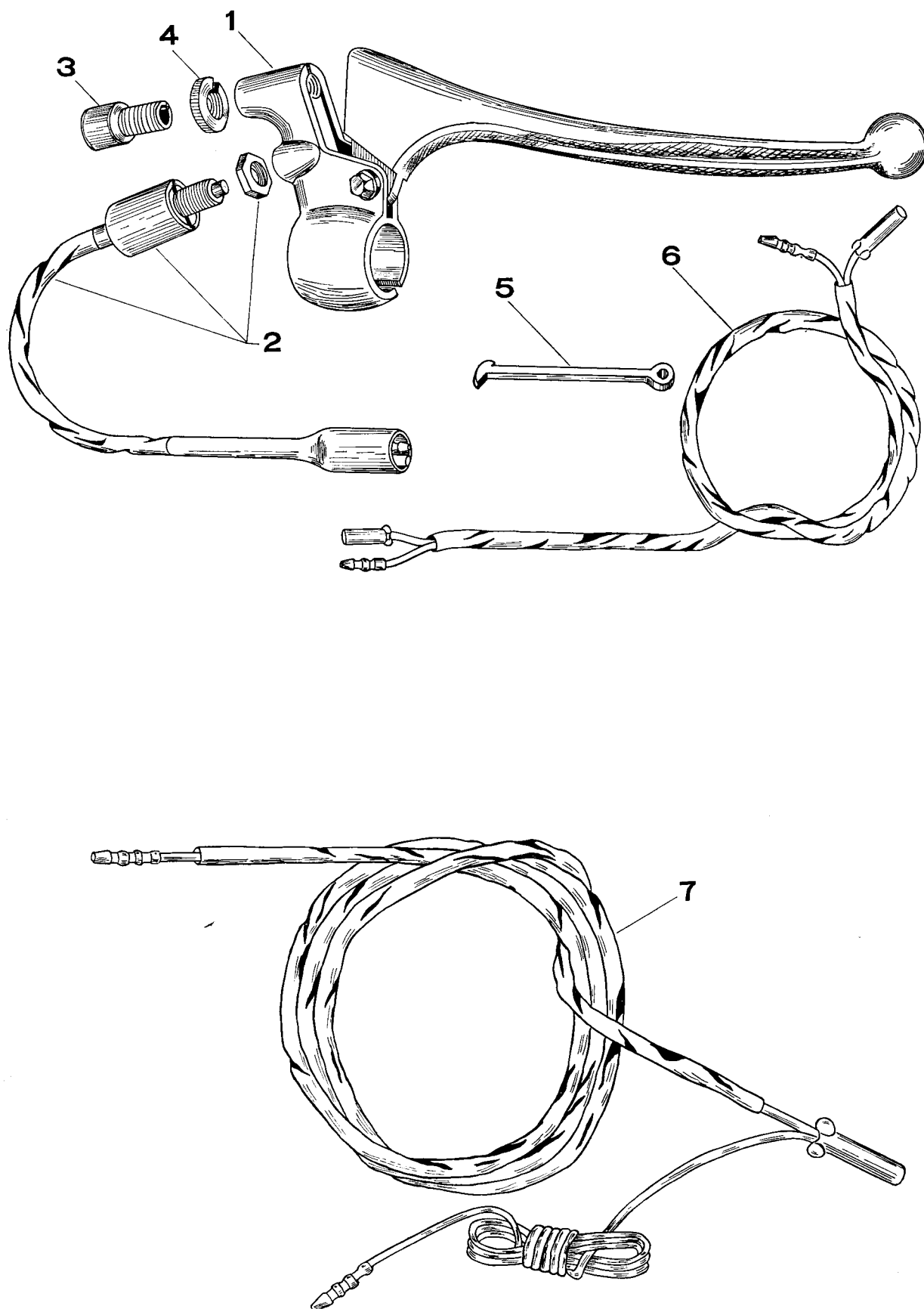
35) SPEEDOMETER • COVER ORNAMENT



35) SPEEDOMETER · COVER ORNAMENT

Index No.	Part No.	Part Name	No. Req'd	Unit Price US \$ (F.O.B.)	Interchangeability				Remarks
					MIIRS	MISS	G/P	TMX	
1	8401-8200	Speedometer ass'y	1		○	○			
2	3474-8200	Speedometer cover	1		○	○			
3	8435-8200	Speedometer cushion rubber	1		○	○			
4	3473-8200-MS	Speedometer holder	1		○	○			
5	6171-8200	Speedometer cable	1		○	○			
6	9411-8200	Speedometer inner cable	1		○	○			
7	0221-0500	Hexagon nut B	2		○	○			
8	0431-0513	Spring washer	2		○	○			
	6811-8200-FAR	Left cover	1		○	○			
	6811-8200-FAB	Left cover	1		○	○			
9	6815-8200	Cover ornament	1		○				
10	6815-8210	Cover ornament	1			○			
	2484-8000	Drive sprocket	1		○	○			16T(Same as 175DT)
	7381-8200	Driven sprocket	1		○				36T
	7381-8010	Driven sprocket	1			○			38T(Same as 175HS)
	7501-8200	Roller chain ass'y	1		○				#428(106 links)

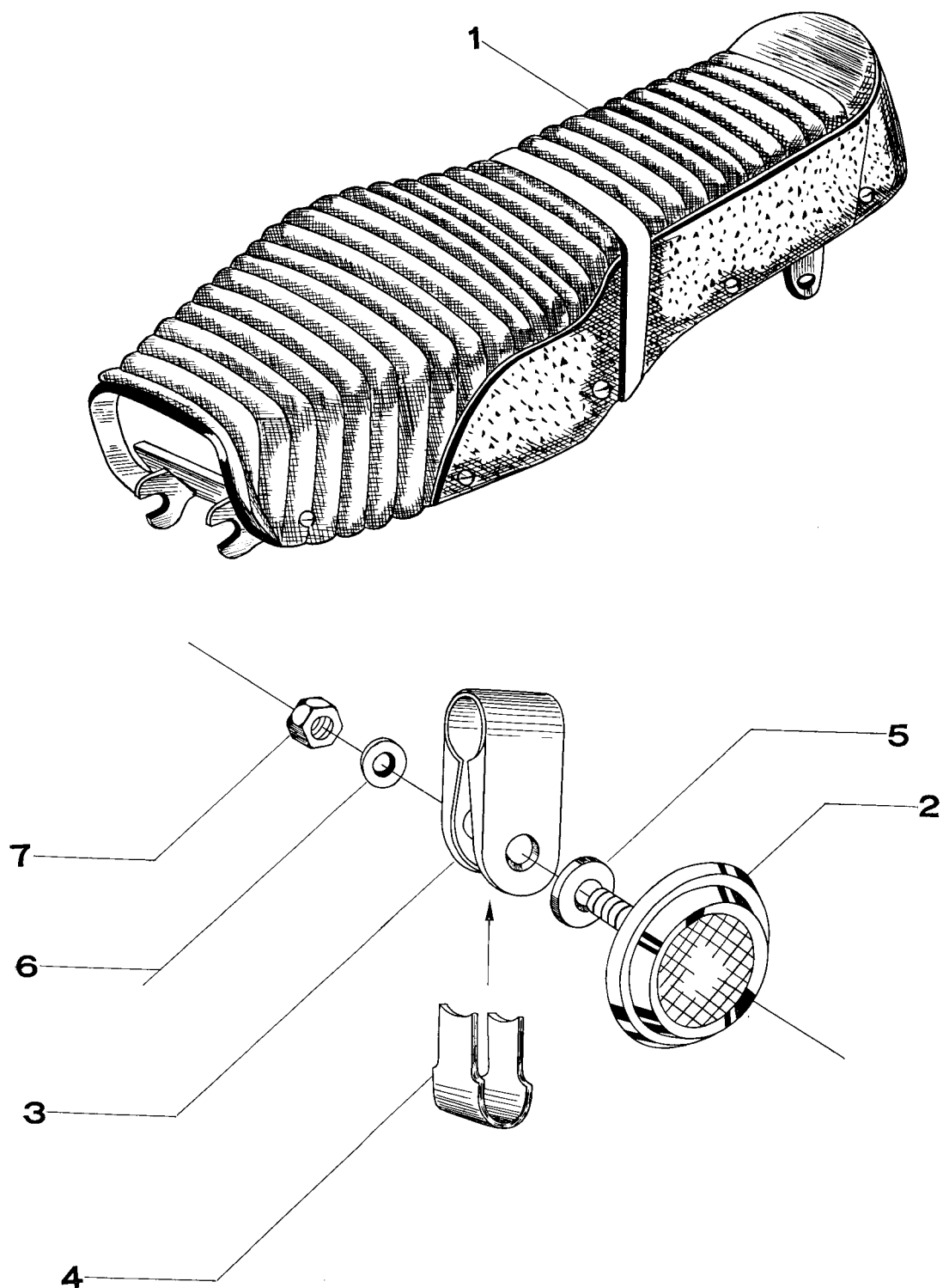
36) RIGHT HANDLE GRIP • FRONT STOP SWITCH



36) RIGHT HANDLE GRIP · FRONT STOP SWITCH

Index No.	Part No.	Part Name	No. Req'd	Unit Price US \$ (F.O.B.)	Interchangeability				Remarks
					MIIRS	MISS	G/P	TMX	
	6104-8200	Throttle grip ass'y	1		○	○			
1	6149-8200	Right lever holder	1		○	○			
2	6134-8200	Front stop switch	1		○	○			
3	6126-8200	Wire adjuster	1		○	○			
4	6127-9000	Wire adjuster lock nut	2		○	○			
	6141-8010	Right switch case	1		○	○			
	6151-8010	Right switch case cover	1		○	○			
	6153-5010	Right handle grip	1		○	○			
	6154-8000	Throttle grip pipe	1		○	○			
	0311-0614	Cross recd pan head screw	1		○	○			
	0311-0616	Cross recd pan head screw	1		○	○			
5	3424-3010	Wire harness stoper	2		○	○			
6	8836-8200	Front stop switch connector	1		○	○			
7	8813-8200	Sub wire harness	1		○	○			For Front stop switch

37) DUAL SEAT - REAR REFLEX REFLECTOR



37) DUAL SEAT · REAR REFLEX REFLECTOR

Index No.	Part No.	Part Name	No. Req'd	Unit Price US \$ (F.O.B)	Interchangeability				Remarks
					MIIRS	MISS	G/P	TMX	
1	6402-8200	Dual seat ass'y	1		○				Vinyl-Leather
	6402-8210	Dual seat ass'y	1			○			Buckskin leather
	8207-8200	Rear reflector ass'y	2		○	○			
2	8281-5610	Rear reflector	2		○	○	○	○	
3	8282-8200	Rear reflector clamp	2		○	○			
4	8283-8200	Rear reflector spacer	2		○	○			
5	09541-123	6 Plain washer	2		○	○			
6	0411-0613	Plain washer A	2		○	○	○	○	
7	0211-0600	Hexagon nut A	2		○	○	○	○	
	5110-8010-FAB	Fuel tank comp	1		○	○			
	5510-8010-FAB	Oil tank comp	1		○	○	○	○	
	4171-8000-MS	Left fork cover	1		○	○			
	4181-8000-MS	Right fork cover	1		○	○			
	4901-8000-MS	Rear cushion ass'y	2		○	○			
	6123-5010	Left handle grip	1		○	○			Same as 350GTR
	6153-5010	Right handle grip	1		○	○			Same as 350GTR

